

Science, Service, Stewardship



GEO-IDE & the NOAA Enterprise Architecture

David Layton
August 13, 2009

Data
Management and
Integration Team



Outline

- CIO Vision
- Conceptual Architecture for SOA
 - The “Big Picture”
 - Infrastructure Services Tier
 - Data Tier
- Related Efforts:
 - NOSC End-to-End Data Management Tasker
 - Update of NAO 212-15



CIO Vision

From

Monolithic Systems

Duplication

Unwieldy

Translation



To

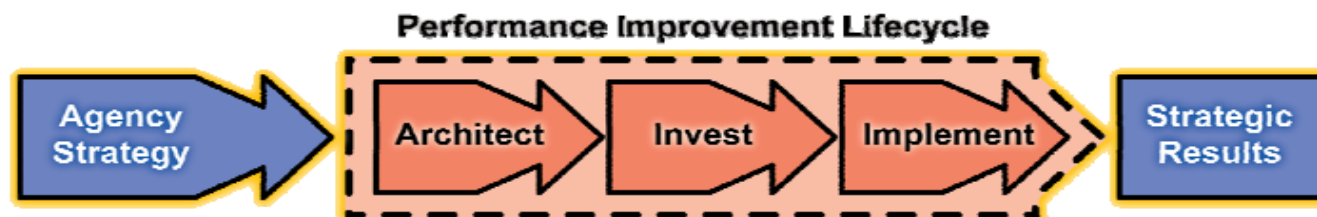
Discrete & Interoperable Services

Reuse & Sharing

Agile

Standardization

- Implementation through Through Policy, Architecture & IT Investment/Portfolio Management

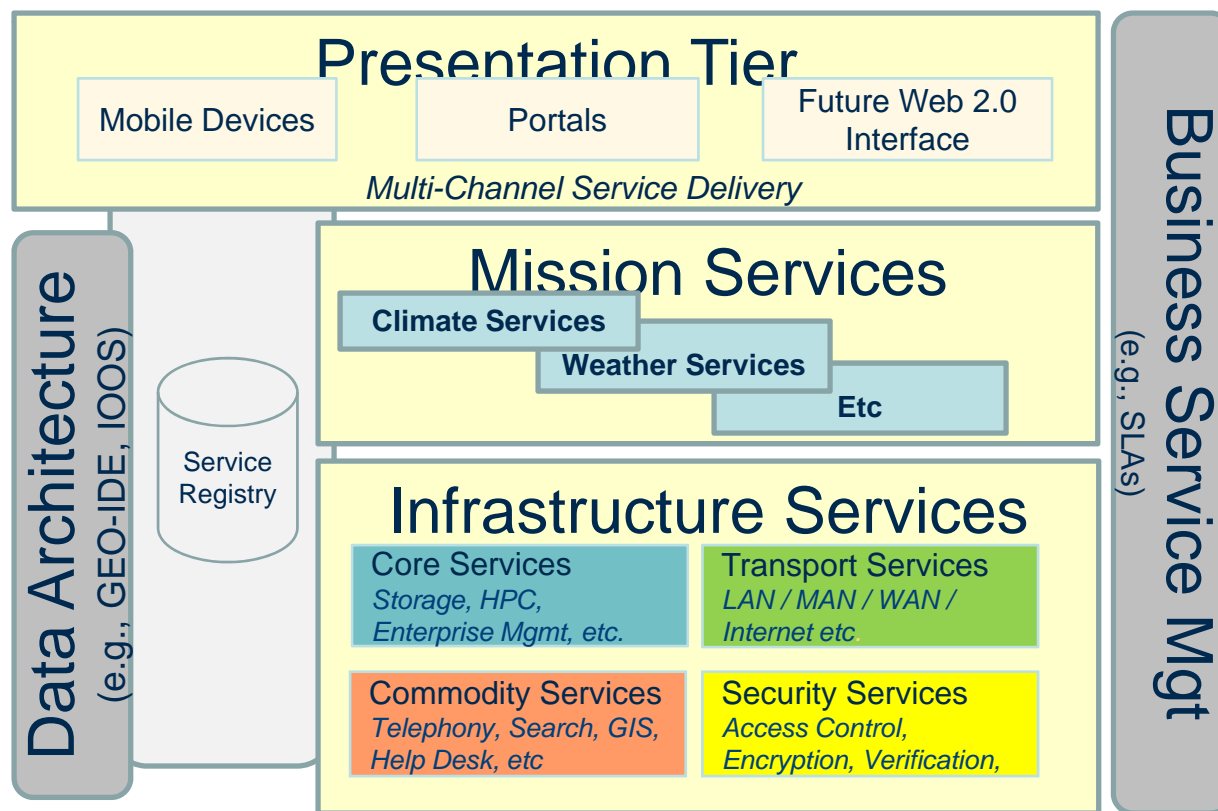




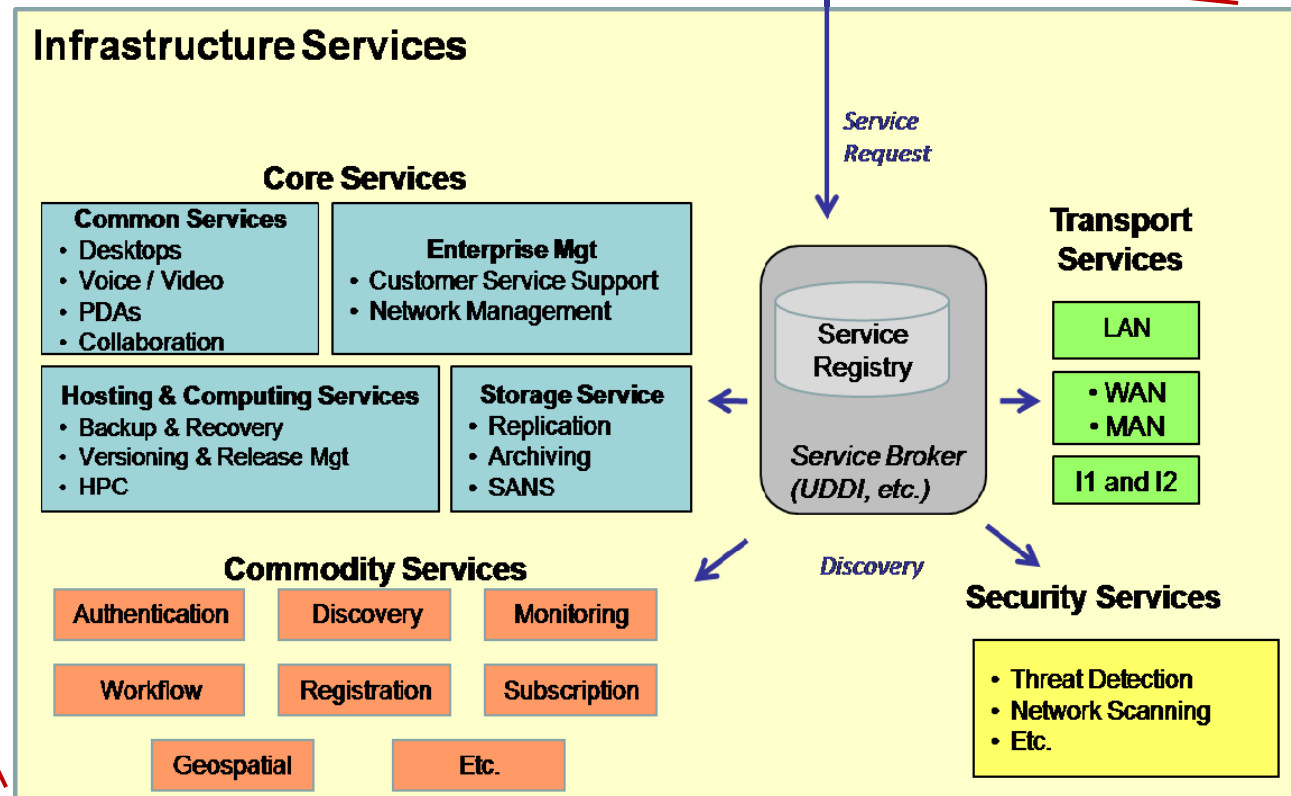
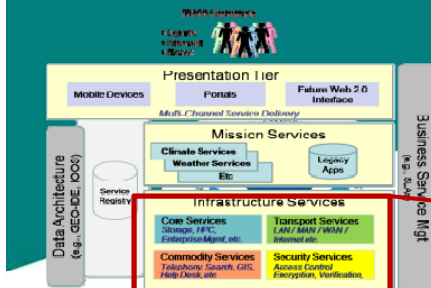
Conceptual Architecture

NOAA Customers

- Experts
- Informed
- Novice

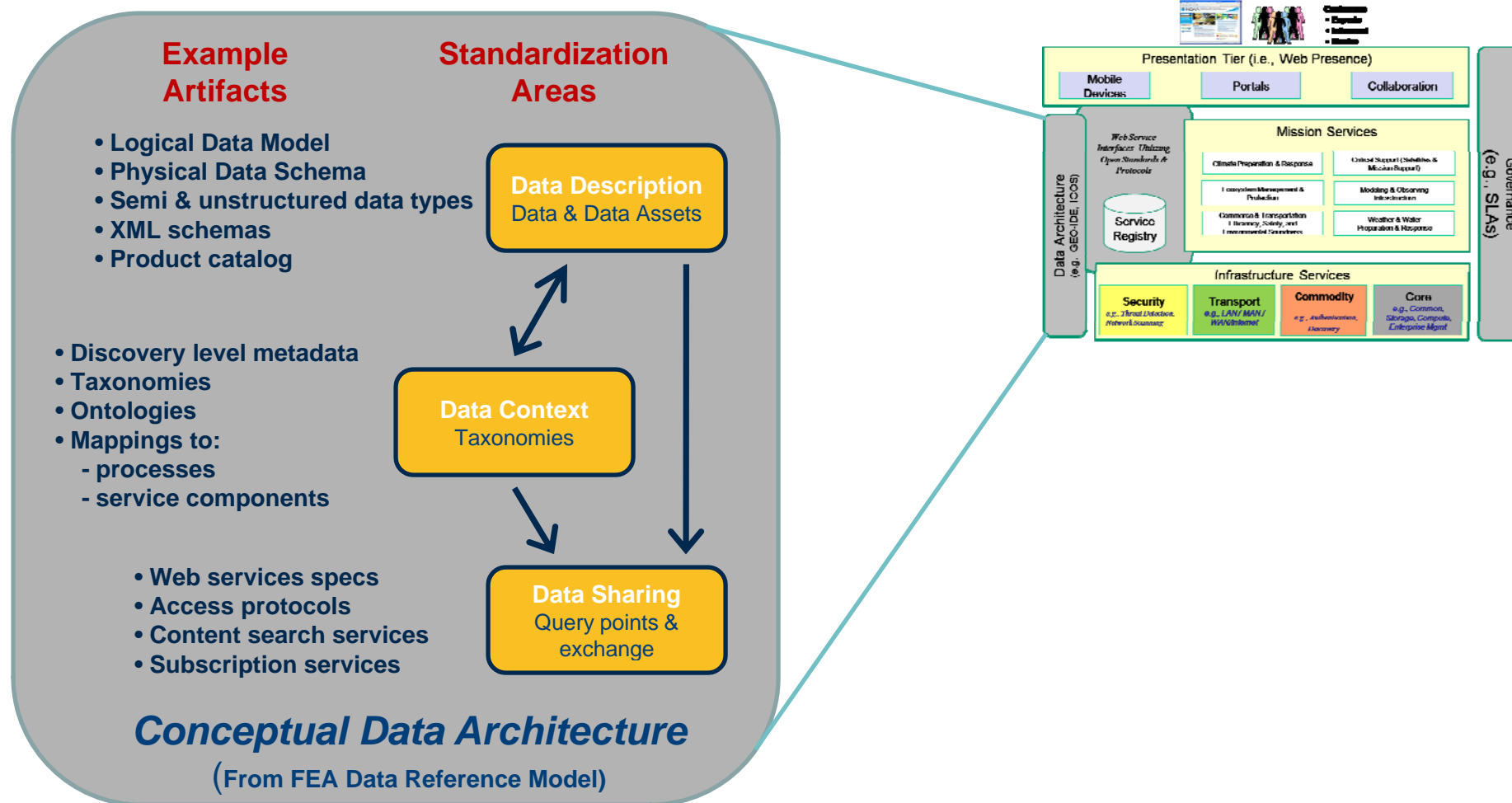


Conceptual Architecture (cont.)





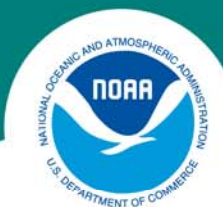
Conceptual Architecture (cont.)



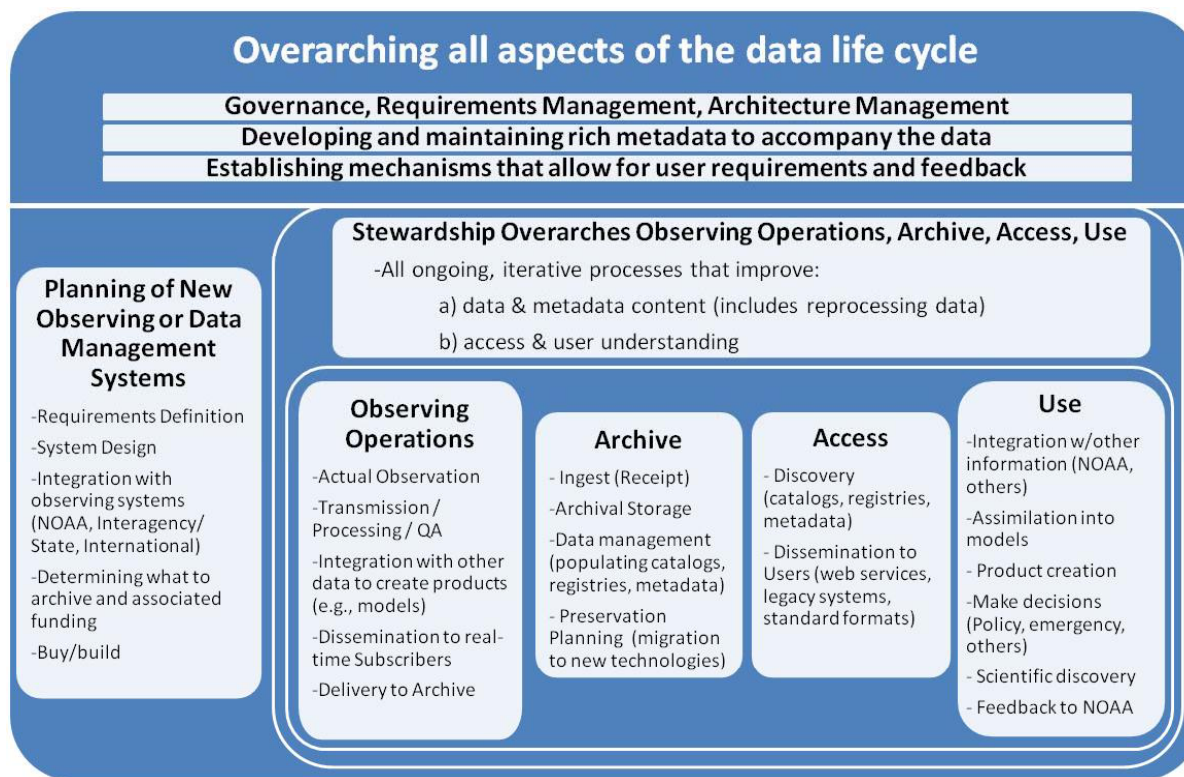


Related Initiatives

- NOSC Tasker for End-to-End Data Management:
 1. Map out each element included within the end-to-end data management chain
 2. Identify those elements with potential for data integration
 3. Identify the council/committee/group with responsibility for each element
 4. Identify those elements which appear to have overlapping oversight and, most importantly, those elements not being addressed adequately.
- Update of NAO 212-15 (Management of Environmental & Geospatial Data & Information):
 - Ownership by CIO
 - Simplification to focus on principles
 - Split Policy from Operational Procedures
 - Vetting through DMC and CIO Council
 - Tightly related to NOSC Tasker



Proposed NOAA environmental data management framework



- Mapping of the data life cycle functions to the NOAA governance bodies will result in a NOAA environmental data management framework
- Broaden and strengthen DMC to be an agent for both NOSC and OCIO